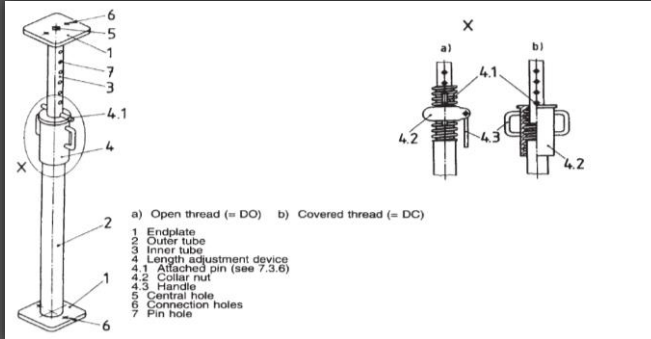


Suhail Metal Forming

Technical Data Sheet (TDS)

Date:-18.02.2024

Items	Steel Prop 2.2-4 m, fully open 4 m.
type and load capacity	Light/ 6 KN fully open
weight	10.5 kg , +/- 0.5 kg
Pipe Size Inner/Outer	40/48 mm
type of thread	covered thread
Specification & Grade	EN 10219-1&2 GR.S235
Manufacture	MAYSTRO INTERNATIONAL
Process of Manufacture/Scope	Engineering, Fabrication and welding, painting/galvanising, Testing,Shipment



S.NO	Characteristic	Description	specifications/dimensions	Attached document	Remarks	
A	<u>Components</u>			Full detail drawing to be submitted by the supplier to show the details of the points from 1-7 on the above picture.		
A.1	End Plate	Flat version ,120X120X5 mm	EN10025. S235JR			
A.2	outer tube	Ø48 mmX2 mm thickness,	equivalent to EN 10219 GR. S235JR			
A.3	Inner tube	Ø 40 mmX2.5 mm thickness,	equivalent to EN 10219 GR. S235JR			
A.4.1	Pin	Ø12 mm	EN10083, grade S235 JR			
A.4.2	Collar Nut	Machined	EN1562			
A.5	Central Holes	Distance between holes 100 mm				
B	<u>Welding</u>			-		
B.1	As per EN ISO 15614, AWS D1.1, Automatic welding					
C	<u>Finishing</u>			painting test		
C.1	Red Paint: RAL 3020, to be confirmed after first sample.					
	F2 as per EN1065, out side painting		50-100 UM			
D	<u>Load test</u>			laboratory test by 3rd party		
D.1	load test will be held on SGS laboratory or equivalent, the test will start from the closing position, then every 100 mm we need to measure the load until it will be fully open.					
D.2	The load on the maximum extension should be 6 KN at least					
D.3	the test will be done after doing the first piece, if it pass, then the production will continue					
D.4	every batch will be tested as per the standard before shipment					
E	<u>Other points</u>			-		
E.1	there shall be an overlapping length between the inner and outer tube of at least 300 mm when the prop is fully open					
Manufacturer				Customer		
Sign and date				Sign and date		